

Clear Path 465

The Clear Path 465 project is working to transform one of the state’s busiest interchanges with high-speed, high-capacity ramps where I-465 and I-69 connect on the northeast side of Indianapolis. The project will improve safety and reduce traffic weaving and merging. Improvements are expected to open to traffic by late 2025. When the project is complete, drivers will see:



Added travel lanes



Interchange modifications



New ramp lanes



14 new bridges



Pavement replacement



2 rehabilitated bridges

2024: What to Expect

Where You Will See Us

Crews will be working year-round to ensure the project stays on track. 2023 ended with lots of progress, including new travel lanes and ramps on I-69 and I-465. 2024 will be busy, with most work focusing on bridges in the main interchange, added travel lanes on I-465, and the completion of the 82nd Street ramps. We’re also expecting 71st Street to reopen later this fall.

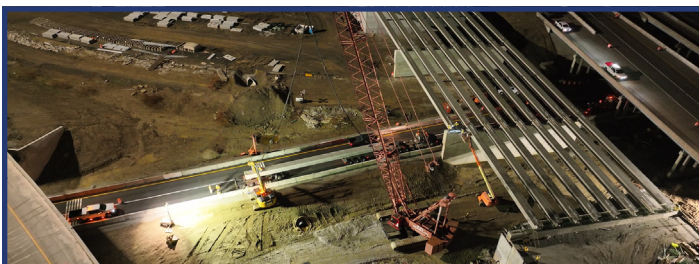


What We’re Doing



Roadway Work

- New travel lanes on I-465 West
- New travel lanes on I-465 South
- New I-69 and 82nd Street ramps
- Noise barrier construction to begin



Bridge Work

- I-465 and I-69 main interchange bridges
- 82nd Street bridges
- 71st Street bridge rehabilitation and widening

What will Open in 2024



71st Street bridge



71st Street under I-465



82nd Street ramps

CLEAR PATH ACCOMPLISHMENTS

First new system ramp and bridge from I-69 South to I-465 West



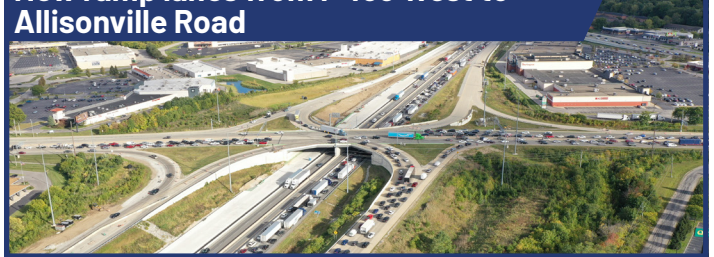
New travel lanes along I-69 South leading into main interchange



New ramp from I-465 North to I-69 North



New ramp lanes from I-465 West to Allisonville Road



New travel lanes along I-465 West



New ramp from 82nd Street to I-69 North



Out with the Old, In with the New

80,000 square yards of existing pavement removed

112,000 square yards of Continuously Reinforced Concrete Pavement (CRCP) placed

502,000 cubic yards of dirt moved

740,000 total pounds of reinforcing steel placed (370 tons!)

23,000+ linear feet of pipe placed

Bridge Work



290,000 pounds of reinforcing steel



More than 2,500 cubic yards of concrete



More than 24,000 linear feet of bridge pile